



# CONSOLIDATED POWER MANAGEMENT SOLUTIONS

**AFS Timers operate with the same functionality — with different configurations, there is a timer for your application!**

## Low Voltage Disconnect

In order to ensure that a temporary load does not create a nuisance shut-down the DVT Timer will wait 15 seconds before disconnecting the circuit.

## Over-Voltage Protection

Immediately disconnects the circuit when voltage exceeds 18 VDC. Reconnects when voltage returns to <18 VDC.

## Infinite Mode

Setting the timer to Infinite Mode allows computers and radios to standby for immediate response. The Infinite Mode also supports VPN communications through on-board routers, allowing the operator to securely communicate with the IT network even when the vehicle is off. The DVT timer will only disconnect when the voltage falls below the low voltage setting and the system will reset once the voltage recovers to 11.9 VDC.

## Solid State Design

Eliminates heat build up and voltage drop across the device.

## Ignition Override

When time is critical the Ignition Override ensures operation of communications equipment.

## Ignition Optional

When using timed circuits the ignition input is optional. The voltage monitoring timer will turn on when voltage reaches 13V, the timer then monitors LVD shut-down settings.

## DVT01-C Dual Voltage Timer

1 Timed Hot Circuit

Length: 4.05"

Width: 2.07"

Height: 1.12"

Weight: 3.2 Oz (0.2 lbs)

Max Load: 30A

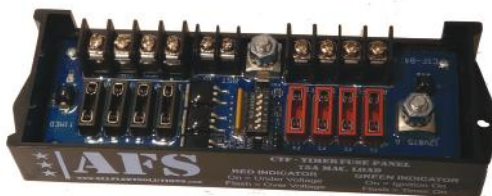
32 Timed Intervals

Programmable for 24 volt applications

2 Diagnostic LEDs



## CTF Timer and Fuse Panel



### CTF-B4T4G

4 Battery Hot Circuits  
4 Timed Hot Circuits



### CTF-T6G

6 Timed Hot Circuits

## CTF Specifications:

Length: 7.25"

Width: 2.07"

Height: 1.12"

Weight: 5.1 Oz (.2 lbs)

Max Load: 75A total combined output

32 Timed Intervals

Programmable for 24 volt applications

2 Diagnostic LEDs

[www.allfleetsolutions.com](http://www.allfleetsolutions.com)

113 Industrial Blvd Ste C1, McKinney, TX 75069

©2022 All Fleet Solutions, LLC

844-423-7200

## Power 18 Flex Power Distribution Center

The Power 18 Flex provides 6 Battery Hot circuits and 12 outputs in three zones. Each zone can be controlled by the vehicle's ignition, a Master Switch, or one of two DC-TMD timer cards. The Master Switch can be connected to a customer supplied switch or an output from a light and siren controller.

The Power 18 can provide 0, 2, 4, 6, 8, 10, or 12 timed circuits on single timed interval. A second timer card may be added to the panel when a distinct second timed interval is needed.

### Battery Hot: Red Circuits

- 6 ATO fuses 30A max per terminal.

### Amp Rating by Zone

- Zone 1: 6 ATO fuses, 30A per terminal, 60A max total load.
- Zone 2: 2 ATO fuses, 30A per terminal, 30A max total load.
- Zone 3: 4 ATO fuses, 30A per terminal, 45A max total load.

### Blue Control DIP Switch:

- The 3 Zones are configured by the blue DIP switches.
- Timer 1, Master or Ignition can control Zones 1, 2, or 3.
- Timer 2 will always control Zone 2.
- Timer 2 may control Zone 3 and Zone 2.
- A Zone can be controlled by more than one input.

### Ignition Hot Circuits:

- The IG input pin activates the ignition hot circuits which are set by the blue control DIP switches.
- 0, 2, 4, 6, 8, 10, or 12 Ignition Circuit configurations can be created with the P18-FLEX.

### Master Switch Circuits:

- The Master input pin activates the Master hot circuits which are set by the blue control DIP switches.
- 0, 2, 4, 6, 8, 10, or 12 Master Circuit configurations can be created with the P18-FLEX.

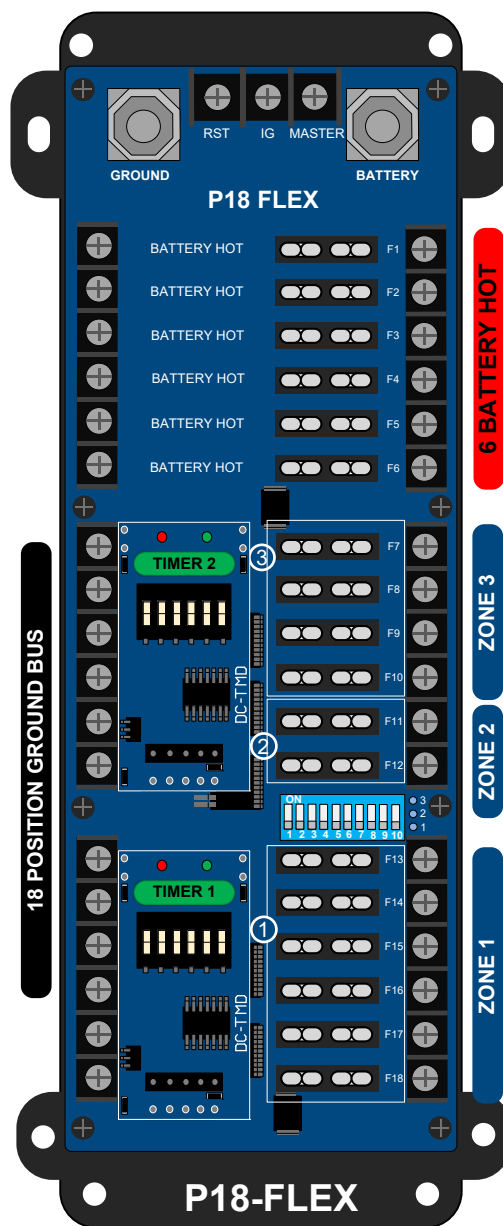
### Timed Circuits:

- 0, 2, 4, 6, 8, 10, or 12 Timed circuit configurations can be created with the P18-FLEX with a single timer card.
- An available 2<sup>nd</sup> timer card is sold separately.
- The IG input pin activates the timer card.
- Black DIP switches 1-4 control the timed interval.
- Black DIP switch 5 controls the Ignition Optional feature.
- Black DIP switch 6 controls the Low Voltage Disconnect.
- Do not set the blue DIP switch to ignition control for the zone if timed circuits are desired, this will override the over-voltage protection.

### Reset Pin RST:

- 12VDC + to the RST pin will shut down the timer.
- A momentary input is recommended.
- The RST pin will clear the LED fault codes.

The Power 18 has a 125 amp max load.



### DC-TMD Timer Cards:

One DC-TMD timer card is included with the Power 18. The single timer card can control up to 12 fused outputs. A second DC-TMD timer card can be purchased to allow for a distinct second timed interval. The timer cards are programmed by the six-position DIP switch to select one of 16 timed intervals from 1 minute to the Infinite Mode. The low voltage cut-off may be programmed for either 11.75 VDC or 11.00 VDC.

### TECHNICAL SUPPORT & SALES CONTACT:

Phone: 844-423-7200

Email: [sales@allfleetsolutions.com](mailto:sales@allfleetsolutions.com)

Web: [www.allfleetsolutions.com](http://www.allfleetsolutions.com)

## Power 32 Power Distribution Center

The Power 32 provides 14 Battery Hot circuits and 18 outputs in three 6-output zones. Each zone can be controlled by the vehicle's ignition, a Master Switch, or one of two DC-TMD timer cards. Additionally, a 10 amp Aux Out circuit on a distinct timed interval and three 10 amp relays are provided. The relay fuse positions can also be utilized for in-line diodes or pass-thru circuits.

The Power 32 can provide 6, 12, or 18 timed circuits on a single timed interval plus the single output Aux Out circuit on a distinct timed interval. The Power 32 is field configurable to support the specific power distribution needs of even the most demanding installations.

### Battery Hot: Red Circuits

- 8 ATO fuses 30A max per terminal.
- 6 Maxi fuses 50A max per terminal.
- 14 Battery Hot circuits, shown with red highlights.

### Blue DIP Switches: **NEW FEATURE**

- The Blue DIP switches determine operation of Zones 1, 2, and 3. Battery Hot circuits are always Battery Hot.
- Each Zone can be set to Ignition, Master, Timer 1, or Timer 2 control by moving the corresponding DIP switch to the on position. Only one switch should be on for each bank of DIP switches.

### Zone 1: Green Timed Hot Circuits

- Fuses F27 to F32 are Zone 1.
- The six circuits are rated for 30A per terminal, 60A max total load, ATO fuses.
- Zone 1 can be set by the Blue DIP switch 1 to be controlled by Ignition, Master, Timer 1, or Timer 2.

### Zone 2: Yellow Ignition Hot Circuits

- Fuses F21 to F26 are Zone 2.
- The six circuits are rated for 30A per terminal, 60A max total load, ATO fuses.
- Zone 2 can be set by the Blue DIP switch 1 to be controlled by Ignition, Master, Timer 1, or Timer 2.

### Zone 3: Blue Master Switch Circuits

- Fuses F15 to F21 are Zone 3.
- The six circuits are rated for 30A per terminal, 60A max total load, ATO fuses.
- Zone 3 can be set by the Blue DIP switch 1 to be controlled by Ignition, Master, Timer 1, or Timer 2.

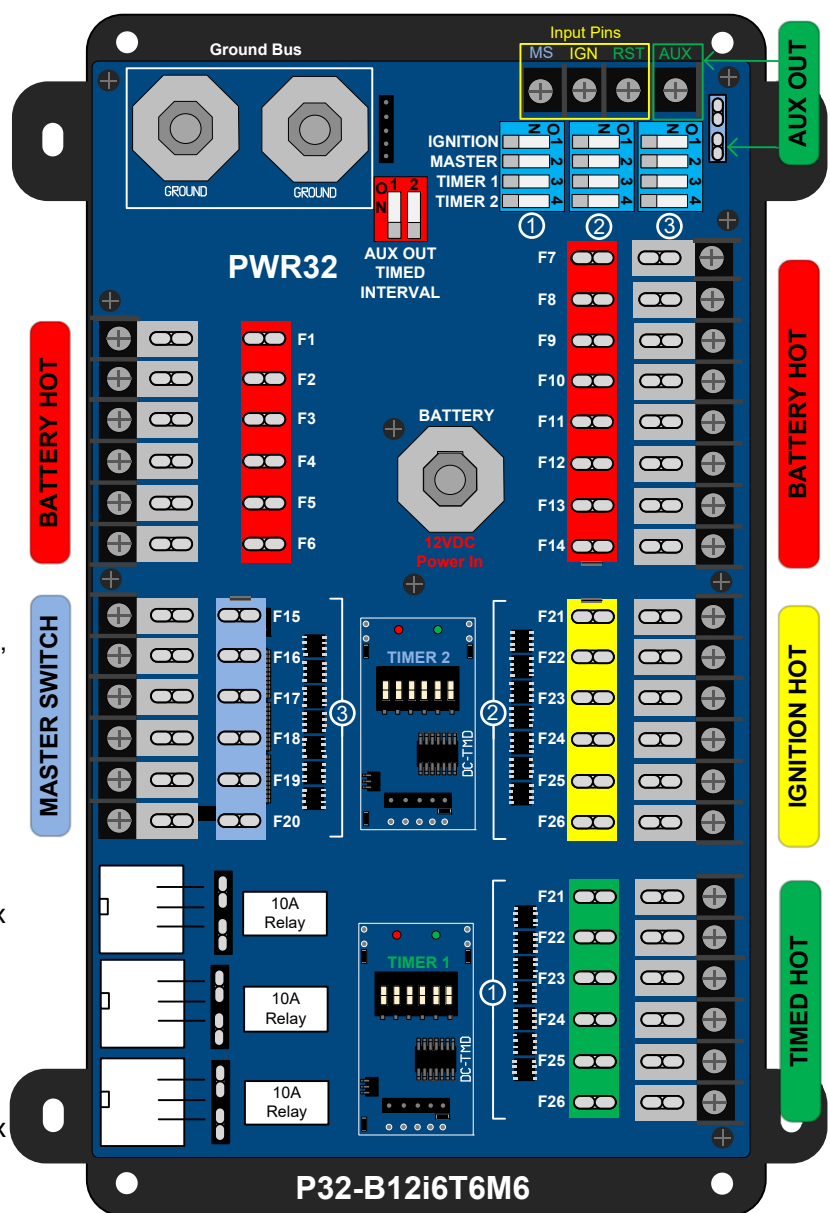
### Reset Pin RST:

- 12VDC + to the RST pin will shut down the timer.
- A momentary input is recommended.
- The RST pin will clear the LED fault codes.

### Aux. Out: **NOW 10 AMPS**

- A 10A Aux. Out circuit is controlled by a distinct timer embedded on the PCB which is programmed by the two position Red DIP switch adjacent programming header.

The Power 32 has a 125 amp max load.



### Three 10A Relays:

- All five positions of the relay are available in the six-position connector, plus a ground to the board allowing positive or ground triggers and outputs.
- Recommended applications include horn transfer, door opening, light interrupt, service siren mute, in-line diode, and gun locks.

### DC-TMD Timer Cards:

One DC-TMD timer card is included with Power 32. The single timer card can control up to 18 fused outputs. A second DC-TMD timer card can be purchased to allow for a distinct second timed interval. The timer cards are programmed by the six-position DIP switch to select one of 16 timed intervals from 1 minute to the infinite mode. The low voltage cut-off may be programmed for either 11.75 VDC or 11.00 VDC.

## Power 12 Series

### Power 12 P12-B4i4T4

#### 3 set control zones:

- 4 Battery Hot Circuits
- 4 Ignition Hot Circuits
- 4 Timed Hot Circuits

### Power 12-FLEX

#### 3 configurable control zones

0,2,4,6,8,10 or 12 Ignition  
Circuit configurations can be  
created and 0,2,4,6,8,10 or 12  
Timed Circuits using the single  
DC-TMD card.

### Power 12-FLEX-DT

All features of the FLEX plus  
a 2nd timer card for  
configurations needing 2 distinct  
different timer intervals.



## P12 Specifications:

Length: 10"  
Width: 5.57"  
Height: 1.25"  
Weight: 2.04lb  
16 Timed Intervals  
12 Fused terminals  
30 Amp max per terminal  
12 Position Ground Bus  
2 Diagnostic LEDs per timer, 4 total  
2 Separate Timer or Ignition cards  
M6 Studs for Power and Ground  
Max Load: 125A total combined output  
Reset Terminal, 12VDC shuts off

## Power 18 Series

### Power 18-FLEX

#### 3 configurable control zones

6 Battery Hot Circuits  
0,2,4,6,8,10 or 12 Ignition  
Circuit configurations can be  
created and 0,2,4,6,8,10 or 12  
Timed Circuits using the single  
DC-TMD card.

### Power 18-FLEX-DT

All features of the FLEX plus  
a 2nd timer card for  
configurations needing  
2 distinct different timer  
intervals.



## P18 Specifications:

Length: 12.25"  
Width: 5.57"  
Height: 1.25"  
Weight: 2.14lb  
16 Timed Intervals  
2 Diagnostic LEDs  
18 Fused terminals  
30 Amp max per terminal  
18 Position Ground Bus  
M6 Studs for Power and Ground  
Reset Terminal, 12VDC shuts off outputs  
Max Load: 125A total combined output

## Power 32

## Configurable Power Management

14 Battery Hot circuits and 18 outputs in three 6-output  
zones. Each zone can be controlled by the vehicles  
ignition, a Master Switch, or one of two DC-TMD timer  
cards. 6, 12, or 18 timed circuits on a timed interval  
plus the single 10 amp aux out circuit on a distinct  
timer. Three 10 amp relays are provided.  
Power 32 includes one DC-TMD card.  
Power 32-DT includes Two DC-TMD cards.

