

Product Guide 2021

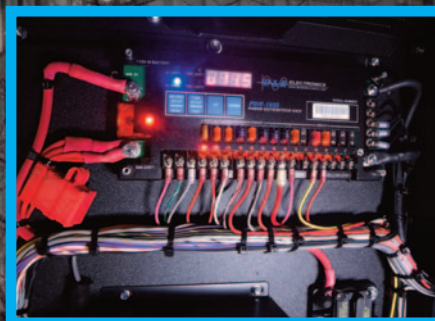


TABLE OF CONTENTS


BATTERY WATCHDOG/ANTI-THEFT MODULES.....	p.14
CONSOLE ACCESSORIES.....	p.19
CONSOLES.....	p.18
DOCKING STATIONS.....	p.22
ELECTRONIC STORAGE BOXES.....	p.25
LAPTOP TRAYS / LAPTOP MOUNTS.....	p.21
LED LIGHTBARS.....	p.3
LED LIGHTS / LICENSE PLATE BRACKETS.....	p.9
LED TRAFFIC DIRECTORS / LED SIGNS.....	p.8
LIGHT/SIREN CONTROLLERS.....	p.10
POWER DISTRIBUTION UNITS.....	p.15
PRINTER HOLDERS/G1 DOCK.....	p.23
REAR WINDOW GUARDS / WINDOW BARS SYSTEMS.....	p.27
SAMSUNG DeX - DOVETAIL.....	p.16
SIRENS.....	p.13
STORAGE SYSTEMS/K9 KENNELS.....	p.26
SUBFRAMES.....	p.24

Cover, Design, and Layout by
Christopher Tari

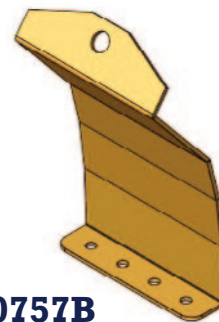
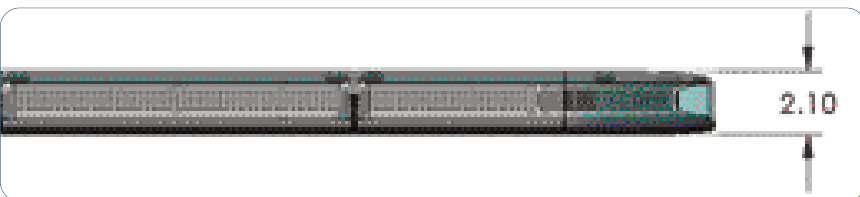
SYNERGY LIGHTBAR



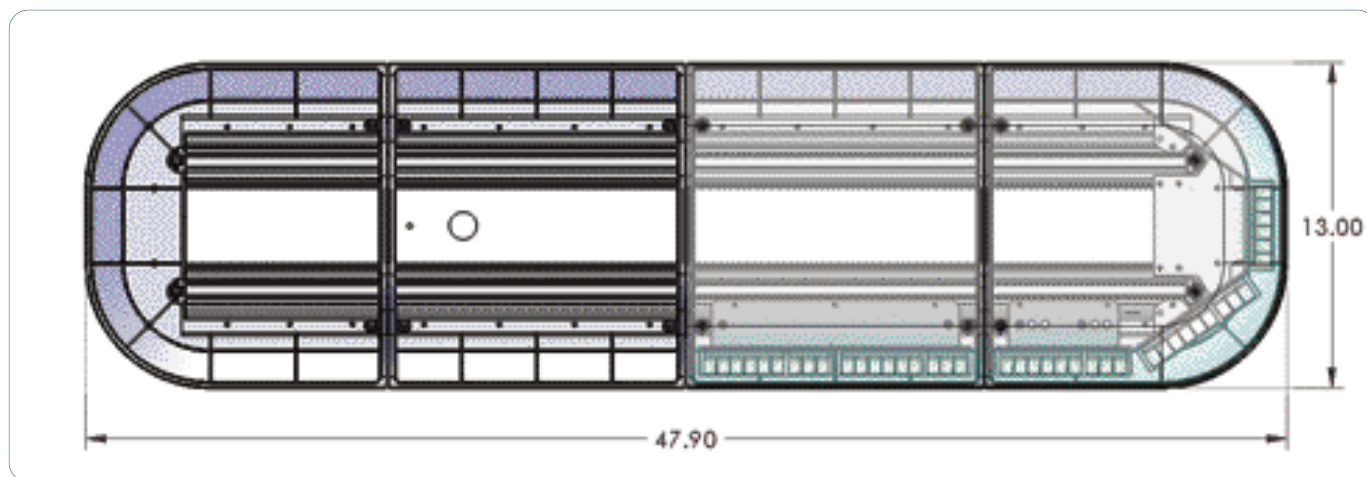
- Available with 6, 12, or 18 High Power LED plug-in modules
- Deep parabolic reflector optix
- Built-in Traffic Director
- Standard Dimmer and Pattern feature
- Built-in and programmable flash patterns
- Options available for configuring with IQ Software
- Flash pattern programs uploadable via USB
- Amperage draw:
6 LED module - 0.65A / 12 LED module - 1.15A /
18 LED module - 1.75A
- Operating Temperature: -40°C to +65°C (-40F to +149F)

- 15 conductor 16 feet harness or DATA Cable when controlled with D&R controller
- UV treated polycarbonate lens
- Screw down lens to base
- Available colors: Amber, Blue, Clear, Red, Green 
- Single/Dual/Tricolor modules available
- Full Front Clear Take Downs available
- Meets all applicable SAE Class1, NFPA and Title XIII when properly configured
- Available sizes:
Width - 13", Height - 2", Length - 24" / 36" / 48" / 60" / 72"
- Gutter clamps to install Synergy Lightbar on Interceptor Utility:

936-0757C - Stainless Steel
936-0757A - Black
936-0757B - White



936-0757B



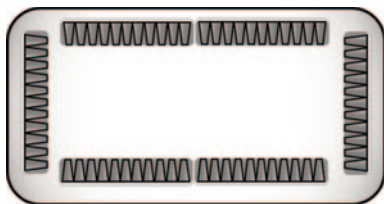
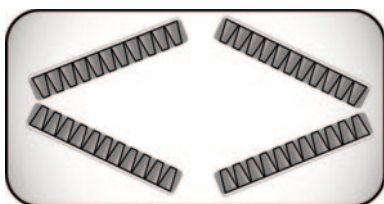
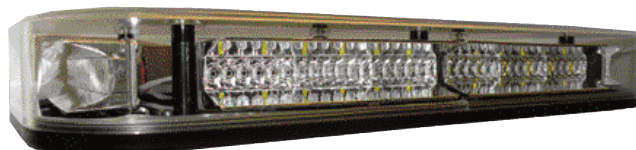
MINITECH LIGHTBAR



MT-4ST6-X / MT-6ST6-X

- Mini LED Lightbar **MT-4ST6-X / MT-6ST6-X**
- Dimensions: L-17", W-8.0", H-2.25" w/o mounting feet
- Weight: 5lbs w/o mounting feet
- HD Extruded Aluminum Base
- Clear Polycarbonate Lens with UV Guard
- GEN III Linear LED Light Modules with 6 or 12 Leds
- 12/24V
- Class 1, SAE J845 Certified

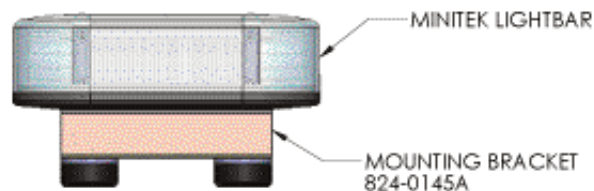
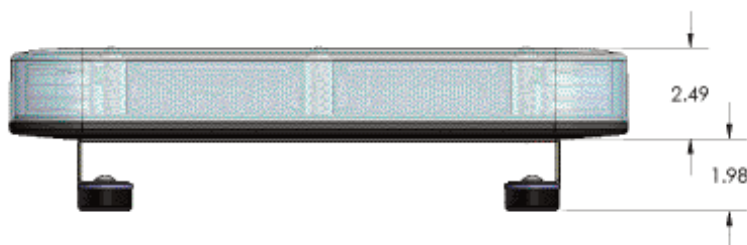
- Operating Temperature: -50°C to +50°C
- LinearLED light Modules with 6 or 12 Leds
- Maximum Draw: GT6 Modules - 3.6 Amp
GT12 Modules - 7.2 Amp
- Available LED Modules colors:
Blue, Clear, Red, Red/Clear, Blue/Clear
- Available Lenses colors: Blue, Clear, Red



Mounting Options Available:

1. 1400-0200 Bumper Rubber Lightbar feet
2. 90.3281 Cigarette adapter plug ON/OFF Momentary 12ft cord
3. Magnetic Mount kit with four round 90 lbs pull magnets*
4. Magnetic Mount, medium height mount kit, two 1.75" tall brackets (936-0543A) and four round 90 lbs pull magnets*
5. Magnetic Mount, medium height mount kit, two 4" tall brackets (936-0544A) and four round 90 lbs pull magnets*

*Note: Magnetic mounting will not work on vehicles with aluminum bodies



ODYSSEY LIGHTBAR / FLIP-UP ARROW BOARD

- The Odyssey LED sign is a compact lightbar and arrowboard combination
- The retractable motorized arrowboard / traffic director provides superior visibility in a low profile configuration
- This patent design gives you the full advantage of a 360-degree lightbar when in lower position

FEATURES:

- GEN III LED technology
- Low-profile (3" high) and 'Easy Swap' plug and play modules
- Motorized actuator for easy deployment
- Compatible with D&R Light Controllers / Light & Siren Ctrl
- Mounting kit included
- Meets SAE Class I and Title XIII when properly configured

MINI ODYSSEY LIGHTBAR

1



2



3



1. ODM3-1A Board with One Arrow (12 LED modules in Board)
2. ODM3-2A Board with Two Arrows (16 LED modules in Board)
3. ODM3-1ARA Board with One Arrow and Road Alert (12 LED modules in Board)

Mini Odyssey Dimensions:

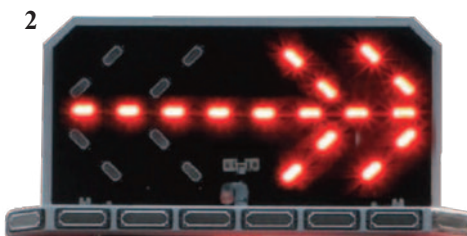
Sign Down: W-47 3/4", D-21 1/4", H-3.0"
Sign Up Raised Height: 19 7/8"

ODYSSEY LIGHTBAR

1



2



3



1. OD3-1A Board with One Arrow (16 LED modules in Board)
2. OD3-2A Board with Two Arrows (24 LED modules in Board)
3. OD3-1ARA Board with One Arrow and Road Alert (16 LED modules in Board)

Odyssey Dimensions:

Sign Down: W-47 3/4", D-28 1/4", H-3.0"
Sign Up Raised Height: 26 7/8"

MINI ODYSSEY LIGHTBAR W/BUILD-IN ROAD ALERT SIGN

ODM3-RA



TECHNICAL SPECS:

- Finish: Enamel
- Color: White or Black
- Material: Base-12ga aluminum / Sign-8ga aluminum
- Optional Road Alert designed in
- Dimensions: Sign Down: W-47 3/4", D-21 1/4" / H-3.0"
Sign Up Raised height - 19 7/8"

- Arrow Board: Road Alert RAT-X-40
*X-available colors: Amber, Red
- CPL (Character/Line) - 8
- Programmable messages - 80
- Text Messaging - Yes
- Symbols - Yes
- Fixed / Scrolling Message - Yes

ODYSSEY-ELITE LIGHTBAR



FEATURES:

- Operate with 12 or 24 volts
- Maintenance Connection with Wi-fi or wire
- Easy to use, all-new graphical user interface for setup
- Setup thru web or cell phone
- 2.4" Full Colour Graphics LCD display on Touchpad with full range of backlight colour
- Easy installation 2-wire hook up

MESSAGE BOARD:

- Full size message board
- What you see is what you get setup
- Message board LEDs can display up to 256 levels of intensity, includes LED off
- Message board available in full colour RGB, 2 colour, 3 colour, or Monochrome



GENESIS SLEEK VISOR LIGHT

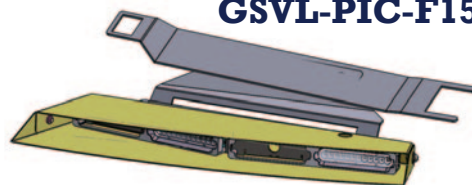
- Hi visibility when activated.
- Low profile, lightweight
- Extremely discrete and non-intrusive
- Split Red/Blue super bright LED
- Single/Dual colour modules
- Take down option available
- Selectable flash pattern
- Aluminum trim mounting brack to hold the lightbar position near the top windshield area
- Molded rubber trim around edge giving tight fit with no Flashback
- Available for a variety of makes and models



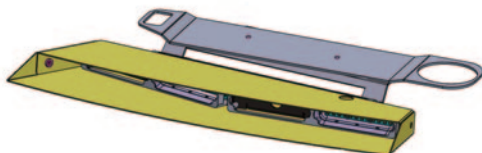
GSVL-PIC-TAHOE



GSVL-PIC-F150



GSVL-PIC-EXP20



GSVL-IC-CHRG



TAILGATE EXTERIOR LIGHTBAR

- Rear spoiler molded LED light stick
- Genesis LED technology design
- Multiple flash patterns built-in
- Arrow functions
- 12 LED's per module
- Single/Dual colour modules
- Available for a variety of makes and models



GT2FTL-PIC-EXP20



GT2FTL-IC-TAH15



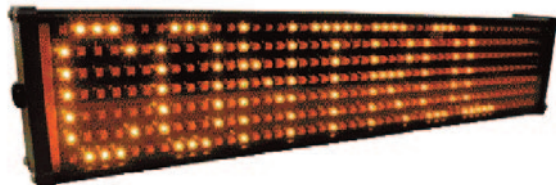
ROAD ALERT LED MESSAGEBOARDS

Available as Kit (including Message Board, Controller and Cables):

RAT-X-20U (20" LED sign, RA-USB ctrl. w/USB

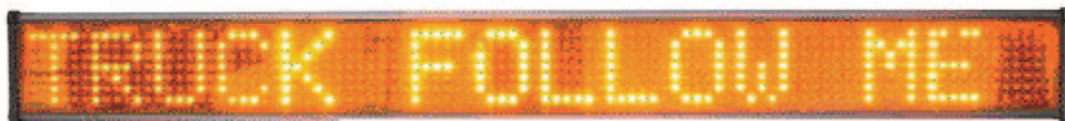
RAT-X-40U (40" LED sign, RA-USB ctrl. w/USB

LED RAT-R-20

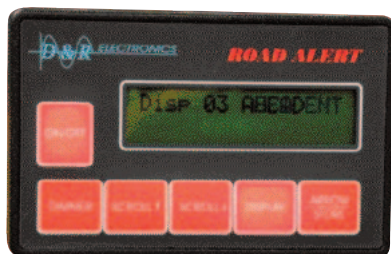


DIMENSIONS	LED RAT-X-20	LED RAT-X-40
WIDTH	20"	40"
HEIGHT	4.0"	4.0"
DEPTH	2.5"	2.5"

LED RAT-R-40



RA-USB



The RA-USB keypad supports the maintenance of user's messages using the RAMM text editor software for Windows. These messages are loaded in the controller via USB thumb drive (memory stick)

Dimensions:

W-3.75", H-2.25", D-1.0"

GEN II LED TRAFFIC DIRECTOR

GT2-8



- LED Traffic Director is a Highly visible, caution/directional indicator to oncoming Traffic
- SAE Compliant Class1 J595, J845
- 8 sealed Genesis modules, each module uses 1Watt LED Technology (available on request with different number of modules)
- Internal / External mounting
- Available in Amber or Red
- Available in a kit configuration with AS5500 Touchpad, Electronics Module, cables and Mounting Brackets

- Needs external control system
- Traffic Directors are also available with optional Photo Dimmer Sensor (the sensor functionality depends on the chosen control system)


Technical Specifications:

- Input Voltage Range: 11-16 VDC
- Current Draw: 3 Amps max
- Operating Temperature: -30°C to +65°C (-22F to +149F)
- Dimensions: W-48", H-2.0", D-2.2"
- Mounting: Surface mount (brackets included)
- Warranty: Five years

- Available in different lengths

LED LIGHTS

GENESIS

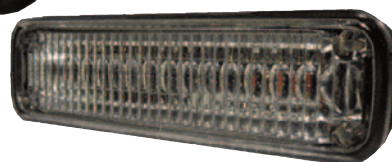
- **GENESIS** modules are our newly designed LED lights
- Surface (GS12-S-X-F), Flush (GS12-F-X-F), Deck (GS12-D-X-F) mount LED flashing modules
- Ideally suited for use as directional or perimeter lighting
- These compact modules provide great versatility for a wide range of mounting
- All modules are sealed, waterproof for external mounting applications
- Multiple flash patterns built-in
- Input Voltage: 11-16 VDC Nominal
- Synchronous or alternate operation
- Dimensions:
 - GS12-D-X-F: L-4.0", H-1.0", D-1.25"
 - GS12-S-X-F: L-4.5" (Bottom), L-4.0" (Top), H-1.0", D-1.25"
 - GS12-F-X-F Exposed Dimensions: L-4.5", H-0.5", D-1.25"
- Available in single and split colors: 
- Meets SAE Class 1 Standards



SURFACE MOUNT
GS12-S-X-F





FLUSH MOUNT
GS12-F-X-F



DECK MOUNT
GS12-D-X-F

LED INSERT LIGHTS

- LED Elements - 12, Ultra Small
- Virtually No RFI/EMI noise emitted
- Meets SAE J1113-41 Class 5
- Compact In-Line Controller and synchronization units
- Die-Cast aluminum base
- Dimensions: Base Diameter-1.50", H-0.8"
- Available colors: 
- Available in split Red/Blue color 
- Encapsulated for moisture and synchronization units
- Safe Low Voltage Wiring
- Includes Pre-Wired 10' cable
- Over 30 Flashing Patterns

SL12IL-X LED INSERT



**Black Bezel - to securely mount your
LED light to any surface (300-0104)**

LICENCE PLATE BRACKETS

- We offer two different modules:

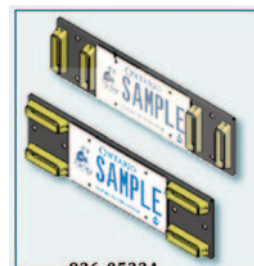
936-0533A

`License Plate Bracket for Genesis Surface Mount LED Modules (x4), two options for mounting the modules (horizontal or vertical)

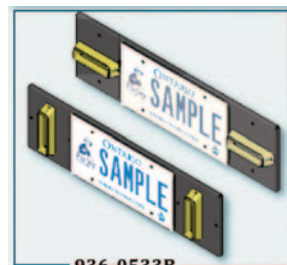
936-0533B

`License Plate Bracket for Genesis Surface Mount LED Modules (x2), two options for mounting the modules (horizontal or vertical)

- GTS12 modules not included
- Rubber U-Channel along the edges
- Dimensions (936-0533A & 936-0533B)
 - Width: 22.15"
 - Height: 6.16"



936-0533A



936-0533B

LIGHT / SIREN CONTROLLER IQ SYSTEM

- Full function amplifier/control module
- Program and control all features of your vehicle: lights, sirens and traffic director
- Easy to use Windows configuration software
- All outputs have short circuit, reversed polarity and over-current protection
- Supports up to 3 temperature sensors modules
- 13 fully programmable analog inputs (+12VDC or GND)
- Integrated battery voltage monitor
- Single or Dual Siren Amplifier
- Programmable for hands-free operation
- Outputs: 12 @ 2Amp/ 8 @ 10Amp/ 1 @ 20Amp
- **Supports up to two Expander modules**, 10 outputs each
- Any output can be programmed for traffic director control
- Any output can be programmed to be controlled by more then one button, input or temperature sensor using an intuitive function priority system
- Supports 7 styles of control head keypads
- Three level dimmer control for push button backlight
- Each button or input can be programmed to be an ON/OFF, Momentary, Cycle or Timer trigger
- Built in shut down system to be able to operate the system for up to 13 hours after vehicle is turned OFF
- Zero stand-by current consumption after timed shut down
- System level programmable Low Voltage Disconnect
- Programmable button group voltage threshold activation
- Standard siren tones (WAIL, YELP, STINGER, HI-LO, AIR HORN) and INTER-CLEAR (multi-tone)
- Air Horn momentary push button overrides all other siren tones
- All control outputs are solid state outputs
- 3 line color very low consumption OLED status display
- All outputs have diagnostic indicator LEDs for quick troubleshooting
- Any switch programmable for SHOTGUN timed out release
- All programs may be modified and stored for ease of service, with a simple export/import process
- USB port on each touchpad provides easy access for programming the system
- Custom labels, easy to replace w/ spill proof membrane
- PA microphone w/ plug in connector and 21' cable included
- Radio rebroadcast function
- Built-in and programmable flash-patterns
- Power and input/output cabling with connectors, standard
- All fuses and connectors easy accessible without removing covers
- Built in beep alert, adjustable via software
- 3 built in data connections
- Meets and exceeds all applicable SAE, California Title XIII, NFPA requirements with select D&R speakers, control and light heads
- Five Year Warranty

IQ MASTER AMPLIFIER/CONTROL MODULE



IQ EXPANDER MODULES

IQEXP-LC Low Current Expander



IQEXP-HC High Current Expander



IQ SYSTEM - CONTROL TOUCHPADS

F5M-IQTP



- Dimensions:
H: 3-1/2"
W: 7-3/16"
D: 1.0"

F5S-IQTP



- Dimensions:
H: 3-1/2"
W: 7-3/16"
D: 1.0"

F5RM-IQTP



- Dimensions:
H: 3-1/2"
W: 7-3/16"
D: 1.0"

F5RS-IQTP



- Dimensions:
H: 3-1/2"
W: 7-3/16"
D: 1.0"

RDS16S-ETP



- Dimensions:
H: 2-1/2"
W: 6-3/4"
D: 1.0"

RDS17S-ETP



- Dimensions:
H: 2-1/2"
W: 6-3/4"
D: 1.0"

GALAXY-IQTP



- Dimensions:
H: 2-3/4"
W: 4-7/16"
D: 1.0"

PROTEC FALCON PFIQ



General Specifications:

- Two models: PFIQ-12 and PFIQ-24
- Input Voltage:
PFIQ-12: 11 to 16 VDC
PFIQ-24: 22 to 28 VDC
- Input Fuse:
60 amps (external) for 12VDC
30 amps (external) for 24VDC
- Operating Temperature Ranges: -30°C to +65°C

- Standby Current:
50mA \pm 10% during IGNITION OFF time-out
0mA after time-out
- Siren:
■ Frequency Range: 700 to 1640 Hz (nominal)
■ Audio Output Power: 32 watts
■ Amplifier Output Impedance: 11 Ohms
■ Input Impedance: 600Ω (radio)



RDS SERIES SIREN/LIGHT CONTROL SYSTEMS

RDS-RK



RDS



RDS-RK / RDS Specifications

- A compact full feature siren/relay modules
- 9 controlled outputs: 3@20Amp, and 6@10Amps
- All control outputs are solid state relays
- Radio re-broadcasting option
- Standard siren tones
- Park Kill
- Gun lock timer
- Operate one or two 100W speakers
- The touchpad includes a 4 position slide switch, 12 illuminated push button switches
- Traffic Advisor indicator (with D&R data input only)
- Meets SAE J1849

RDS16S



RDS17S

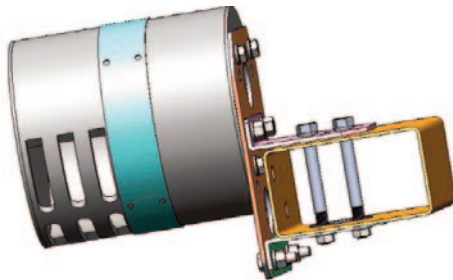


- Light & Siren control with full feature siren.
- 14 controlled outputs: 14@10Amps
- Radio re-broadcasting option
- All control outputs are solid state relays
- Park Kill
- Operates one or two 100W speakers
- Traffic advisor indicator (with D&R data input only)
- Single one touch Master Pursuit button
- Gun lock timer
- Meets SAE J1849

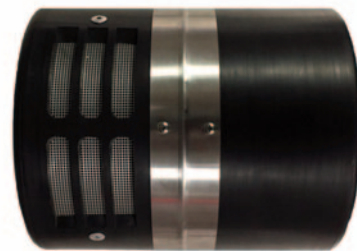
- Light & Siren control with full feature siren.
- 14 controlled outputs: 3@20Amps, 11@10Amps
- Radio re-broadcasting option
- All control outputs are solid state relays
- Park Kill & Gun lock timer
- Operates one or two 100W speakers
- The touchpad includes a 4 position slide switch and 14 illuminated push button switches
- Traffic advisor indicator (with D&R data input only)
- Meets SAE J1849

THUNDER - LOW FREQUENCY SIREN

- Models:
THUNDER-1 Kit includes
1 x TH-LFA (Thunder Low Frequency Amplifier Siren Box)
1 x 189-0200 (Thunder Speaker)
- THUNDER-2 Kit includes
1 x TH-LFA (Thunder Low Frequency Amplifier Siren Box)
2 x 189-0200 (Thunder Speaker)
- Universal Mounting Bracket or optional vehicle specific mounting brackets available
- An add-on to any 100/200 watt siren amplifier to boost vehicle sound to the emergency vehicle primary siren
- Compatible with all vehicles primary siren tones
- Low frequency siren amplifier and speaker included
- Uses the primary siren speaker output



935-0095A Speaker Bracket to mount Thunder speaker



ENFORCER SIRENS

ES6200-IQ



- ES6200-IQ siren uses microprocessor based technology to provide a compact electronic siren system for use in emergency vehicles
- Ideal choice for undercover applications
- Siren Mode - two available siren tones: Wail and Yelp
- Siren tones can be selected using the toggle switch from the remote controller
- Manual Mode - Air Horn
- Park Kill Mode - this will automatically interrupt the siren tones if they are engaged; this input is GND activated.

ES6201-IQ



- ES6201-IQ siren uses microprocessor based technology to provide a compact electronic siren system for use in emergency vehicles
- Ideal choice for undercover applications
- Siren Mode - two available siren tones: Wail and Yelp
- Manual Mode - Air Horn
- Note: Manual mode will override the Siren mode
- Park Kill Mode - this will automatically interrupt the siren tones if they are engaged; this input is GND activated.



SPEAKERS / SPEAKER BRACKETS

DRCS100



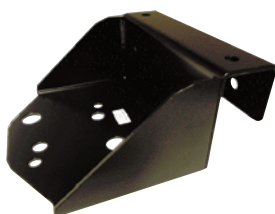
- DRCS100 is one of D&R's most innovative cast 100 W speakers
- Includes bail bracket
- Exceeds Class A SAE J1849 requirements
- Dimensions: W-6.5", H-5.375", D-3.0"

DRCS110



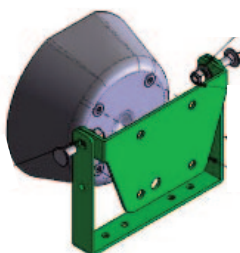
- All weather nylon composite black housing with front loaded 100W speaker driver
- Exceeds Class A, SAE J1849 requirements
- Dimensions: W-6.85", H-6.35", D-2.78"

935-0067A



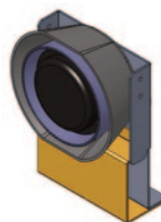
- Single pushbar inverted speaker bracket
- Bracket for DRCS110

935-0079A



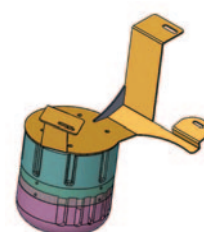
- Universal bracket to mount DRCS110

935-0094A



- 2020 Ford Utility DRCS110 110 Speaker Bracket behind grill

935-0095A



- 2020 Ford Utility Thunder Speaker Bracket

ANTI-THEFT MODULES

ADT12



- Electronic Anti-Theft module
- Permits the removal of ignition key while the engine continues to run

ADT30A



- Automatic Anti-Theft module
- Activation upon door opening

BATTERY WATCHDOG

D&R WATCHDOG is designed to enable operation of vehicle accessories with the vehicle shut off without fear of battery drain inhibiting engine start. Reducing unnecessary idling promotes fuel cost savings and reduces maintenance. Allows for a safe and simple way to add electronic accessories to any of today's complex automotive electrical systems providing the security of an isolated ignition power source with an adjustable off delay. By using a D&R WATCHDOG battery protector you no longer need to worry about having a drained battery or leaving your key in the ignition to keep needed electronics powered up.

WATCHDOG-B60



SPECIFICATIONS

- Operating Voltage: 9V - 18V
- Low Voltage Disconnect: 11.5V *
- High Voltage Disconnect: 18V
- Stand-by Current: 8 mA
- Operating Current: 350 mA+LOAD
- Min. Time Delay: 2 min.
- Override Time Delay: 2 min..
- Max. Load Current (with correct gauge wire)
- Watchdog-B60: 60A
- Watchdog-B120: 120A
- Selectable Time Delay: 2 min.-13hrs.

*Note: Voltage disconnect (threshold voltage) is where the watchdog takes action.

The operating voltage is the range where watchdog monitoring circuit operates regardless of the action taken by the watchdog.

WATCHDOG-B120



POWER DISTRIBUTION UNITS

YOUR POWER SOURCE & BATTERY MANAGEMENT FOR ALL YOUR EQUIPMENT

The PDU-16SS and PDU-6SS provide a direct, easily traceable route to the input power source avoiding interfering with the vehicles factory wiring harnesses.

Features:

- Programmable Low Battery Voltage Shutdown
- Programmable Timed Shutdown
- Zero current consumption in Sleep Mode

PDU-16SS



Specifications:

Voltage Range: 11-18 VDC

Maximum Current Load:

10A per output at 15A

30A for heavy duty output, fused at 50A

100A total maximum current per PDU

Standby Current: 30mA

Sleep Mode: 0mA

Dimensions: L-10.55" / W-4.26" / H-1.1"

Specifications:

Voltage Range: 11-18 VDC

Maximum Current Load:

10A per output at 15A

30A for heavy duty output, fused at 50A

100A total maximum current per PDU

Standby Current: 0mA

Sleep Mode: 0mA

Dimensions: L-12.0" / W-4.0" / H-1.5"

PDU-31SS



PDU-6SS



Specifications:

Voltage Range: 11-18 VDC

Maximum Current Load:

10A per output at 15A

25A for heavy duty output, fused at 40A

50A total maximum current per PDU

Standby Current: 30mA

Sleep Mode: 0mA

Dimensions: L-5.3" / W-4.26" / H-1.1"

PDU-2SS-12



Specifications:

Voltage Range: 12-24 VDC

Maximum Current Load:

40A at output 1

20A at output 2

Standby Current: 25mA

Sleep Mode: 0mA

Dimensions: L-4.35" / W-2.5" / H-1.25"

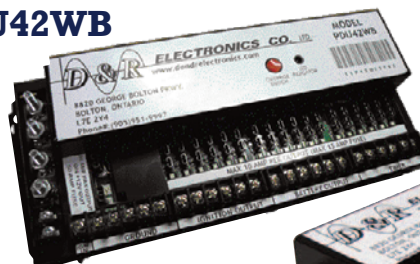
- Organizes vehicle wiring runs
- All power connections at one central location
- Provides direct power, ignition power and timed power
- Easy installation, easy connection of accessory equipment

- Visual condition of circuits
- Make a safer electrical connection to vehicles
- Built-in battery Watchdog (battery discharge protector)
- Fast and reliable vehicle installations

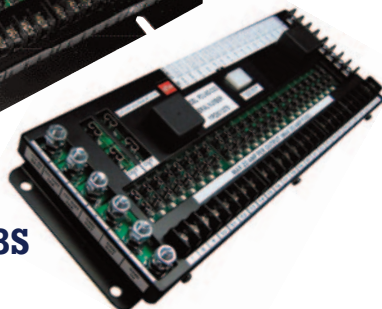
PDU14-K



PDU42WB



PDU-8S



PDU42YRP



GENERAL INFORMATION ABOVE, FOR DETAILS ON EACH MODEL, VISIT OUR WEBSITE

www.dandrelectronics.com

SAMSUNG DeX - DOVETAIL



Dovetail is a universal mounting solution supporting the changing Galaxy Smart phone environment.

A mounting solution that enables docking various models of Galaxy Smart phones, without modifications.

Provides charging to smartphones.

Enjoy a vivid video experience

HD+, FHD, and WQ HD resolutions

Change the default speakers from your mobile device to a monitor, or other audio devices

Houses the Samsung Multiport Adaptor, which has ports for HDMI Out, USB-C, Power In, USB 2.0, and Ethernet

Allows for dual screen display



DOVETAIL RUGGEDIZED MONITOR/KEYBOARD

- 11.6" high-brightness PCAP 10-point multi-touch monitor with AR and AF coatings for better visibility
- Perfect your DeX optimized smartphone experience with a single plug
- Rich USB ports support additional external devices with one on top for easy reaching
- Easy to switch between PC and smart phone input sources
- Night mode provides red monochrome to reduce eye strain

Specifications

Display

- 11.6" TFT LCD Full HD (1920 x 1080)
- 1000 nits high brightness
- Contrast Ratio: 1000:1
- Viewing Angle: 85°/85°/85°/85°
- Projected capacitive touchscreen with 10-point multi-touch
- Anti-reflective and anti-fingerprint coatings

Audio

- 3W stereo speakers with amplifier x 2

Control Button

- Black out x 1,
- Mute x 1, volume x 2, Brightness x 2
- Video input select x 1

Certifications

- CE
- FCC Class B
- E-Mark

Power

- 9-36 VDC @ Max 4A (12V Nominal)

I/O Interface

- USB2.0 type C x 1 (DisplayPort supported)
- USB 2.0 type A x 5, USB 2.0 type B x 1
- HDMI 1.4 x 1
- DC-in x 1

Rugged Feature

- Waterproof (front panel) and MIL-STD-810H certified
- Vibration and shock resistance

Environmental (Tested to MIL-STD-810H standards)

- Operating temperature : -20° C to +60° C
- Storage temperature : -30° C to +70° C
- Humidity : 95%, non-condensing

Mechanical Spec

- 75 mm VESA mount
- Dimension (W x H x D) : 296 x 216 x 43.5 (mm)
- Weight : 1.8 kg

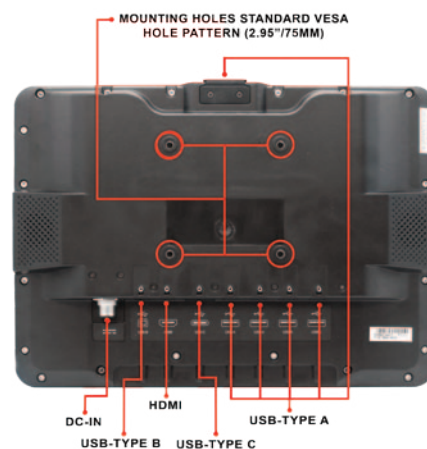
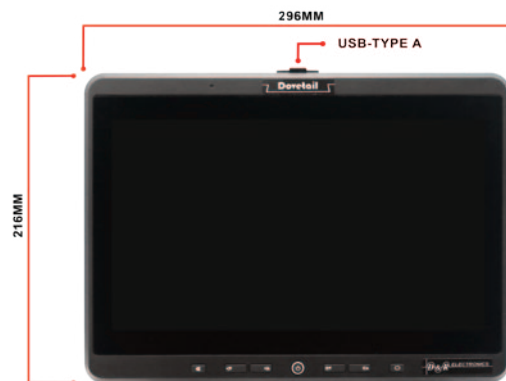
In-box Accessories

- Power cable
- USB Type C to Type C Cable, 1 Meter (with screw lock on device side)
- HDMI Cable, 1 Meter
- Metal bracket for exterior cable entry

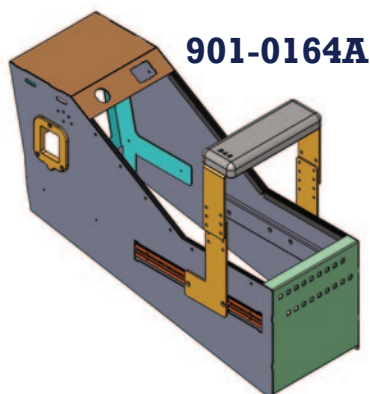
Optional Accessories

- USB 2.0 A-Male to A-Female Extension Cable, 1 Meter
- USB 2.0 Type B to Type A cable, 1 Meter

※ We suggest you buy the cables verified by RuggON

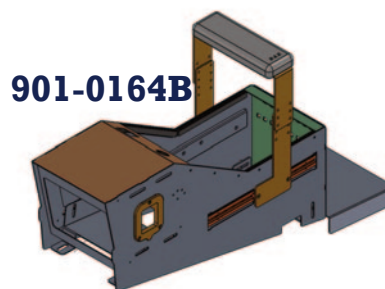


CONSOLES

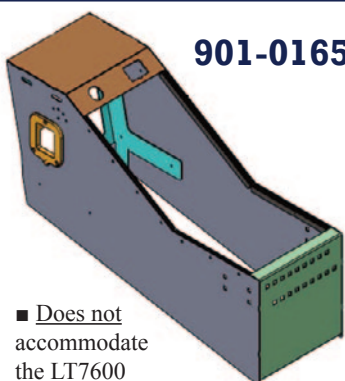
**901-0164A**

- Designed to fit 2020 Ford Interceptor Utility
- Console with sliding armrest
- OEM USB & 12V Outlet Mounting
- Allows for mounting up to 5 pieces of remote head equipment
- Floorplate not required to install this console

■ Does not accommodate the LT7600

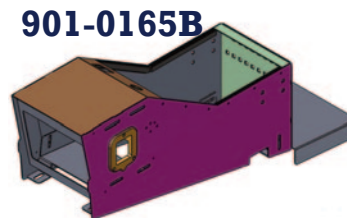
**901-0164B**

■ Accommodates the LT7600 (not included)

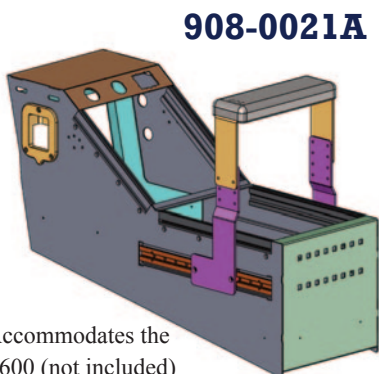
**901-0165A**

- Designed to fit 2020 Ford Interceptor Utility
- OEM USB & 12V outlet mounting
- Allows for mounting up to 5 pieces of remote head equipment
- Floorplate not required to install this console

■ Does not accommodate the LT7600

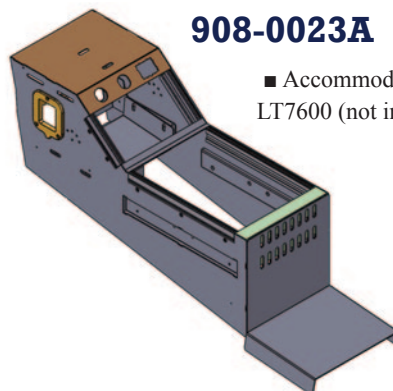
**901-0165B**

■ Accommodates the LT7600 (not included)

**908-0021A**

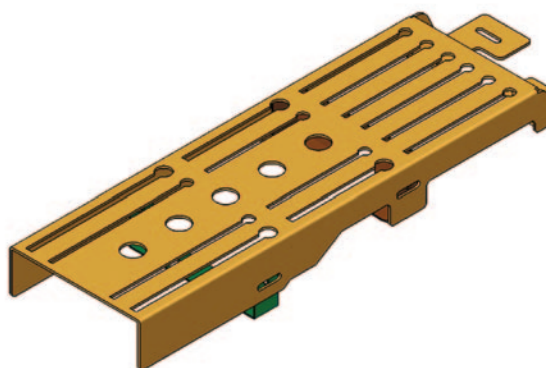
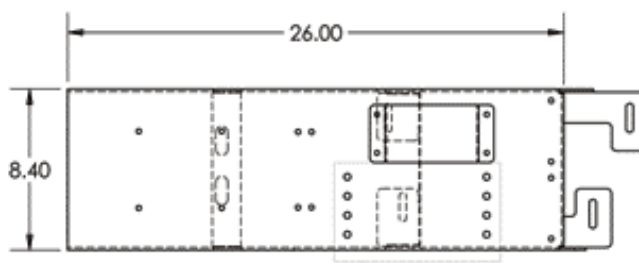
- Designed to fit 2020 Ford Interceptor Utility
- OEM USB & 12V outlet mounting
- Allows for mounting up to 5 pieces of remote head equipment
- Floorplate not required to install this console

■ Accommodates the LT7600 (not included)

**908-0023A**

■ Accommodates the LT7600 (not included)

FLOORPLATE

**905-0148A**

CONSOLE ACCESSORIES - ARMRESTS

904-0158A



Console mount Armrest
with D&R logo pad

904-0159B



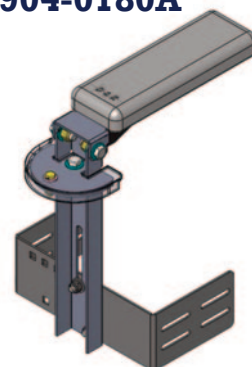
Slim Floormount
Armrest with D&R
logo pad

904-0135A



Soft molded rubber Side
mounting Console
Armrest-Driver Side
904-0136A Passenger Side

904-0180A



Slim Console Mount
Armrest W/Adjustable
height

CA-0211



- Printer Armrest designed to enclose and protect the PocketJet printer & paper spool
- Compact and ideally suited to mount in the confined space between the driver and passenger seats of all mid and full sized vehicles
- **CA-0210** is same as CA-0211 but mounts to the back of the D&R console Printer not included.

CA-0115



Adjustable
armrest,
mounts to rear
of console

CA-0124



Adjustable armrest with
the rear mounted clip
board holder

CA-0119



- Adjustable armrest
- Secures to equipment floor mounting plate

LED MAPLIGHT

CA-0128 / CA-0129 / CA-0130

- Available in: 6", 12" and 18" lengths
- 3 Phase light intensity 1 Watt LED (Low, Medium, High)
- Available in 12 /24V
- 280 degree Turning Radius
- 1 Watt Red and White LED
- **USB plug option available:**
CA-0128-USB, CA-0129-USB, CA-0130-USB



TICKETBOOK HOLDER

CA-0104



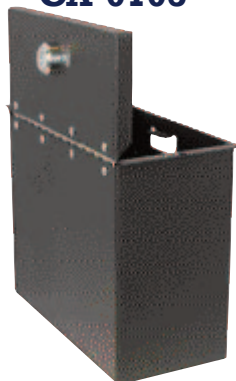
- Ticket book holder
- Design to mount in console
- Dimensions: L-3.5", W-8.0", H-6.25"

CA-0104S



- Ticket book holder
- Design to mount in console
- Dimensions: L-3.5", W-8.0", H-3.0"

CA-0105



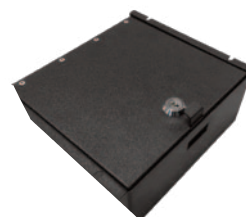
- Ticket book holder with keyed locking lid
- Design to mount in console
- Dimensions: L-3.5", W-8.0", H-6.0"

CA-0105S



- Ticket book holder with keyed locking lid
- Design to mount in console
- Dimensions: L-3.5", W-8.0", H-3.0"

CA-0153A



- Ticket book holder with keyed locking lid
- Design to mount in console
- Dimensions: L-3.5", W-8.0", H-3.0"

POWER OUTLETS

CA-0101



- Dual outlet 12V power accessory
- Individually switched, fused and backlit
- 15 Amp max per output

14.0553



- Triple outlet 12V power accessory with lighter plug
- 15 Amp max per output

CA-0103



- Triple outlet 12V power accessory
- Mounts in console.
- Dimensions: L-8.0", W-3.5"
- CA-0103S Dim: L-8.0", W-1.5"

TSCR101



- Dual USB Charger

CUPHOLDERS

CA-0107LS



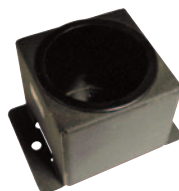
- Dual cupholder (one regular size cup and one large cup)
- Mounts in console
- Dimensions: L-4.25", W-8.0"

CA-0107



- Dual cupholder (regular cup size)
- Mounts in console
- Dimensions: L-3.5", W-8.0"

904-0148A



- Single Large cupholder
- Mounts to floor plate or flat surface
- Dimensions: L-4.31", H-3.31"

CA-0117L



- Dual cupholder w/two large cups
- Mounts to floor plate or flat surface
- Dimensions: L-5.69", W-8.56"

CA-0117



- Dual cupholder with two regular cup size
- Mounts to floor plate or flat surface
- Dimensions: L-4.88", W-8.0"

LAPTOP/TABLET MOUNTS

LT7600



- Secures to top of D&R Console
- Dual 360 Degree swivels allow the computer to swing from the driver to the passenger seat
- LT7600 accepts all D&R computer specific trays, universal trays and popular keyboard trays
- Tilt adjustment allows the user to tilt the computer to a comfortable working position
- LT7600-A Same as LT7600 but with locking pin

LT6600-A



- LT6600 Passenger Side Mount connects to the passenger seat bolts
- Full featured computer mount with height, tilt, dual 360 swivel and extension adjustments
- Utilizes laser cut swivel components to provide a compact unit ideal for small to full size cars and SUV's
- The LT6600 accepts all D&R laptop or MDT specific trays and universal trays

FUNCTIONALITY:

- Height Adjustment: height can be set by the user:
LT6600-A from 13.5" - 21.50"
- Extension Adjustment: this adjustment allows the user to tilt move the computer towards or away from their reach to a comfortable working position (12"-16")
- Mounting Kit: Various kits are available depending on the make, model and year
- All mounts include braces for mount support
- LT66MK-EXPLORER Mounting kit for Ford Interceptor Utility

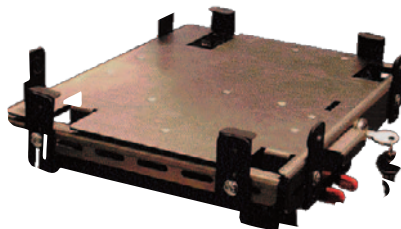
LAPTOP/TABLET TRAYS

907-0281A



Clamshell Panasonic FZ-G1 Tablet Dock with
iKey SB-87-TP-M USB Keyboard Tray.

907-0151C



Universal locking tray 14+ sized laptops

DOCKING STATIONS

Docking Station Features:

- Designed using MIL-STD-810F requirements
- Floating docking connector for ease docking alignment
- Internal protected circuit board
- Compression latch
- Plastic end caps to prevent sharp corners
- Brass machined pins for ease of computer placement
- Lockable keyed alike
- Pre-drilled holes aligned for use on all D&R mounts

PANASONIC CF33 DOCKING STATION NOW AVAILABLE,

PLEASE CONTACT US AT 800-538-7338 FOR DETAILS

CF33



Ports:

- Serial: DB9 (9-PIN) connection (2)
- VGA: (1)
- USB:
Fully-powered USB 2.0 (4)+(1 Front panel)
USB 3.0
- Ethernet: RJ45 Ethernet (2)
- Headphone / Speaker: Stereo (1)
- Noise filtering: Yes
- Input Voltage: 15.6V DC
- Dual antenna coaxial connection
- Built-in DC power supply:
10-24VDC Input,
15.6VDC Output
- Includes 6" input cable w/cigarette lighter
plug adapter
- 16Amp built-in fuse

CF54



- Serial Port: DB9 (9-PIN) connection (1)
- VGA: (1)
- USB:
Fully-powered USB 2.0 (2)+USB 3.0 (2)
- Ethernet: RJ45 Ethernet (1)
- Headphone / Speaker: Stereo (1)
- HDMI Port (1)
- Input Voltage: 15.6V DC
- Dual antenna coaxial connection
- Built-in DC power supply

DS100 POWER SUPPLIES



Power Supply

- Dimensions: 1.0"H x 5-14/16"L x 2.25"D
- Output is -15.6V DC
- Input is -6V to +24V DC
- Optional Universal DC I/P Power Supply
Internal: Direct wired to PCB
External (as shown)
- Required cables are included with the Power Supply

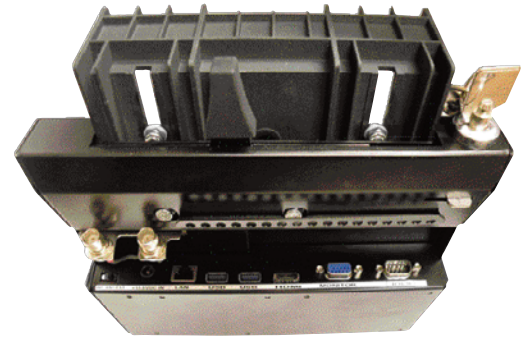
Available Power Supplies:

- DS100-12V
- DS100- 15.6-8A
- DS100-16V
- DS100-20V

PANASONIC G1 DOCK



- 16V external power supply
- Designed using MIL-STD-810F requirements
- Floating docking connector for ease docking alignment
- Internal protected circuit board
- Compression latch
- Brass machined pins for ease of tablet placement
- Available with a G1 handstrap model
- Rugged steel with black powder coat finish
- Lockable keyed alike
- Pre-drilled holes aligned for use on all D&R mounts



Ports:

- USB - 2
- Serial (1) D sub 9 pin
- 1 LAN port connector (optional ruggedize LAN expansion hub available)
- External video (D-Sub 15 pin)
- 16 V DC I/P Power jack
- 1 HDMI Port

BROTHER POCKETJET FACEPLATE



801-0163B

**Faceplate for Brother PocketJet
Printer with Dual Cup Holder**

■ Printer and Paper Roll not included

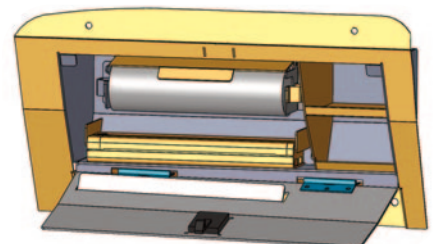
GLOVE BOX PRINTER SETUP

918-0051A

2020 Ford Utility Glove Box Printer Conversion Kit



- Houses - Brother Printer Models PJ600 or PJ700 with paper roll
- Print while glove box is closed
- Features 2 small storage compartments on side
- Hidden wiring provides clean finish
- Easy printer removal for maintenance
- Latching System
- Simple installation



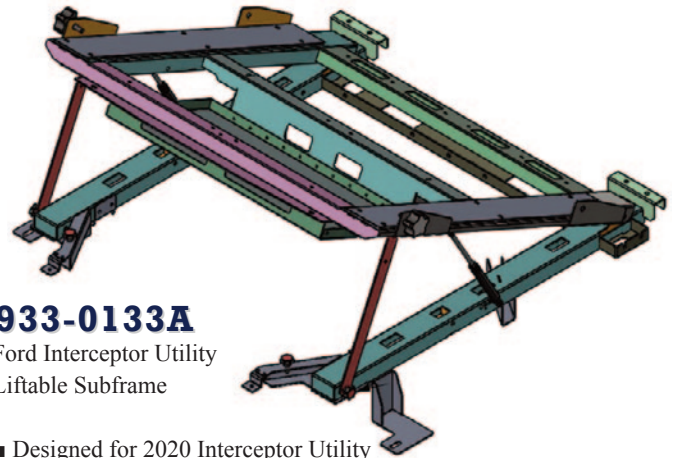
SUBFRAMES



933-0132A

2020 Interceptor Utility Trunk
Raised Frame Shelf

- Designed for 2020 Ford Interceptor Utility
- Utility trunk Raised Frame Shelf
- Specifications:
 - Width - 47.71"
 - Height - 15.50"
 - Depth - 29.00"



933-0133A

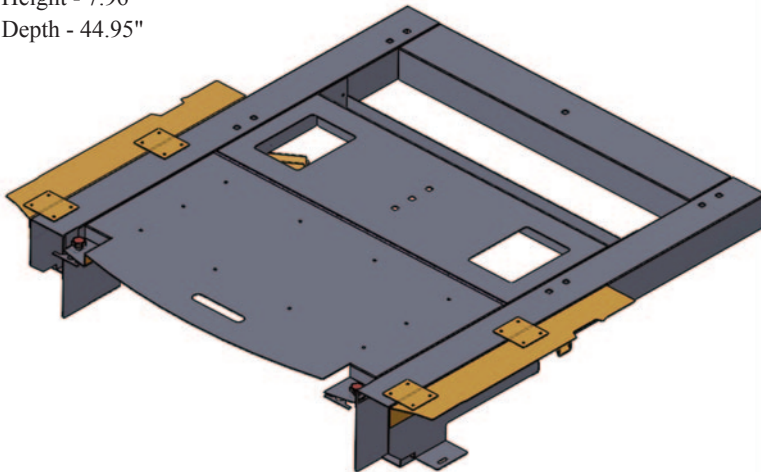
Ford Interceptor Utility
Liftable Subframe

- Designed for 2020 Interceptor Utility
- Subframe support the weight of unloaded cabinet
- Specifications:
 - Width - 40.5"
 - Height - 7.16"
 - Depth - 43.17"

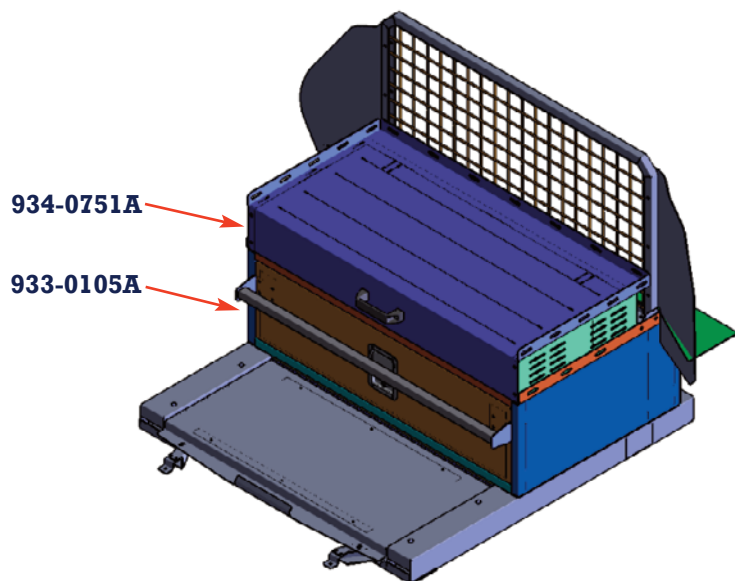
933-0135A

2020 Ford Utility Subframe

- Designed for 2020 Ford Utility Interceptor.
- Optional top cover plate 833-1632A (order under 933-0136A)
- No Tire Access
- Specifications:
 - Width - 40.25"
 - Height - 7.96"
 - Depth - 44.95"



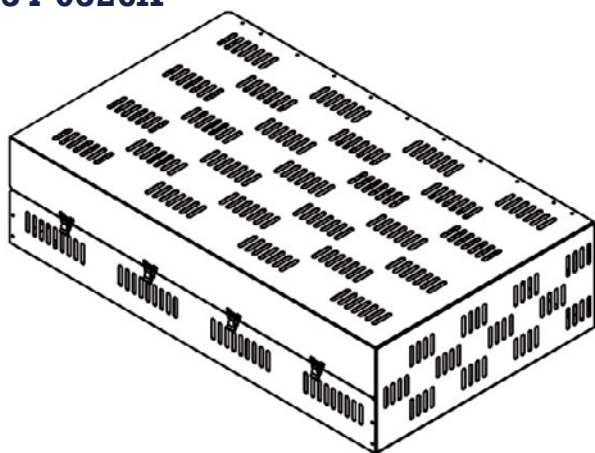
ELECTRONICS STORAGE BOXES



934-0751A & 933-0105A

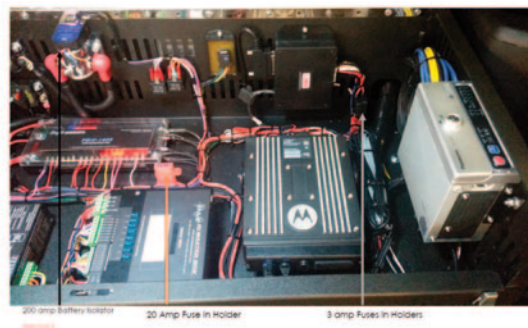
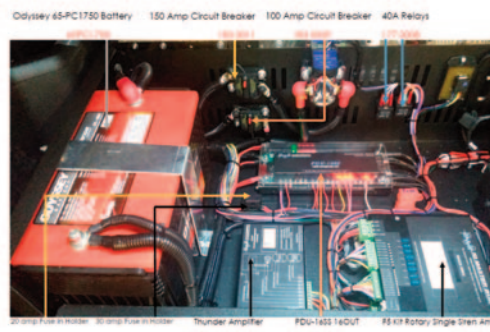
- Electronics Enclosure (934-0751A) mounted on single drawer cabinet (933-0105A)
- Dimensions:
934-0751A: W-40", D-19.50", H-16"
933-0105A: W-40 1/4", D-24", H-12"
- Cabinet constructed from 0.09" (11ga) Aluminum
- Front Locking Pad Latch with dual deadbolt to keep drawer cabinet closed
- Grab bar full width of cabinet to help with opening
- Rubber lined drawer bottom and cabinet top
- Adjustable dividers running front to back
- One pair 24" Heavy duty ball bearing slides 500lbs capacity

934-0526A



Electronics Storage Box comes in 3 different sizes:

- 934-0526A — 40" x 24" x 10"
- 934-0526B — 40" x 18" x 7"
- 934-0526C — 40" x 18" x 10"

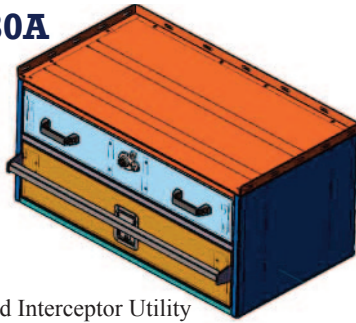


Contact Us for full listing of our Storage Systems

www.dandrelectronics.com

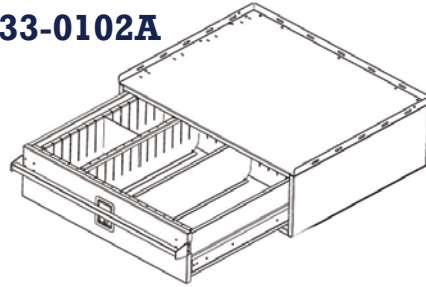
STORAGE SYSTEMS

934-0780A



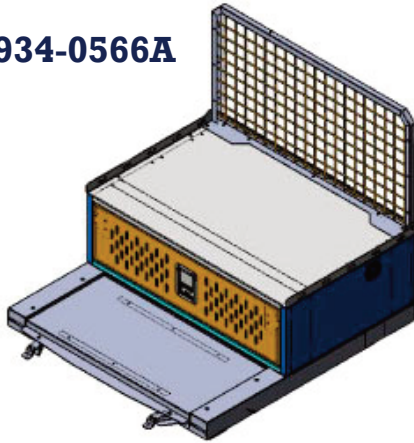
- Fits 2015-2019 Ford Interceptor Utility
- Storage cabinet with bottom drawer and upper gun drawer
- Specs: W - 40", D - 22", H - 18.84"

933-0102A



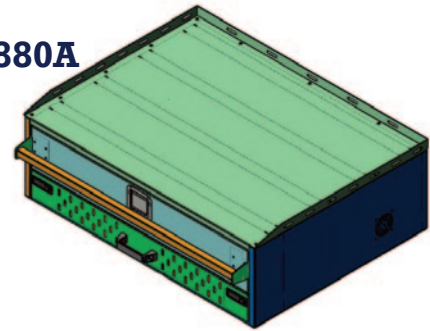
- Designed for 2018-2020 Dodge Durango
- Single drawer
- Lightweight aluminum material
- Hard black epoxy paint

934-0566A



- Electronics Mounting Tray designed for 2012-19 Ford Utility Interceptor
- Heavy duty lightweight aluminum tray
- Cable runners/swing arm/ Dual 12V AC air circulation fans

934-0880A

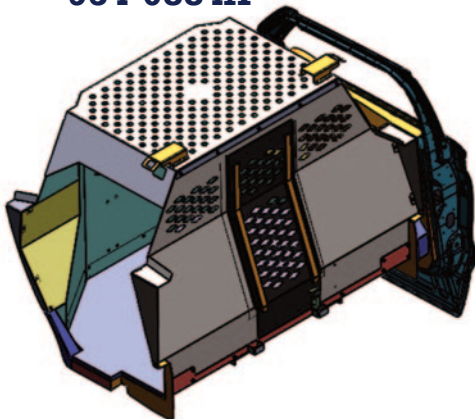


- Designed for 2020 Ford Utility Interceptor.
- Single drawer with Electronics Drawer create a perfect storage solution for the back of your Interceptor Utility vehicle.
- Wire management arm and removable electronics tray located in Electronics Drawer
- Specifications:
 - Width - 40.00"
 - Depth - 30.11"
 - Total Height - 12.09"
 - Bottom Electronics Drawer Height - 4.29"
 - Top Single Drawer Height - 6.44"

Contact Us for full listing of our Storage Systems

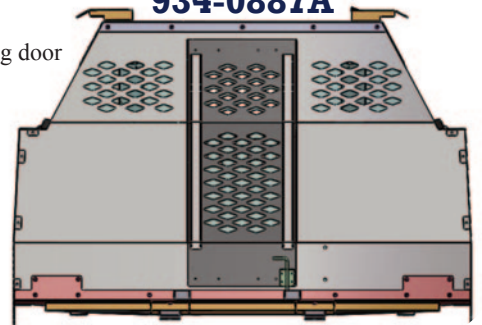
K9 KENNELS

934-0884A



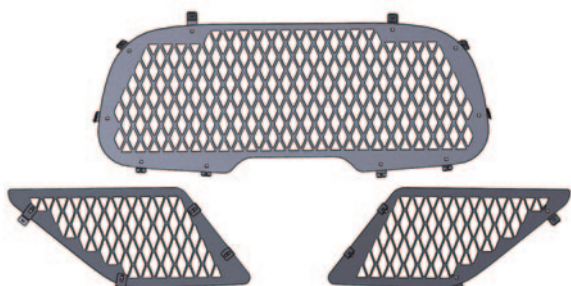
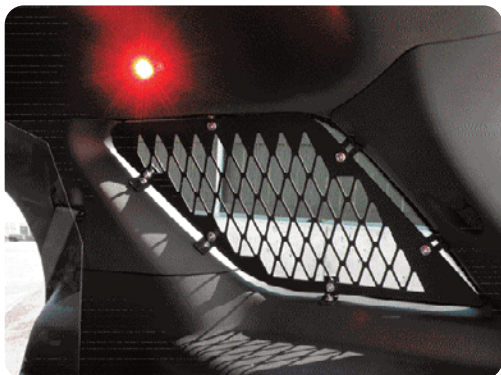
- Designed for 2020 Ford Interceptor Utility
- Full K9 Kennel w/Speaker, Airbag compatible
- Each cage is custom build to the dimensions of your vehicle
- Air ducting system that connects to OEM Rear Vents (must have rear Air Packaging)
- 10" Fan (optional)
- 3/4" Rubber mat
- Two 14" Heavy Duty Slides used for Dog door
- Cages are versatile and spacious
- Keeping your dog safe and secure

934-0887A



REAR WINDOW GUARDS

2020 Utility Window Guards (937-0362A)



- Designed for 2020 Ford Interceptor Utility

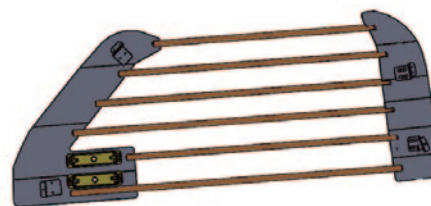
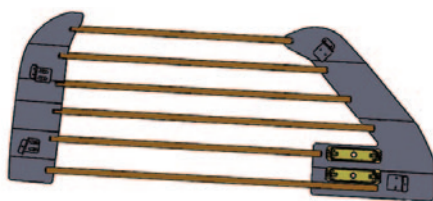


2020 Utility Raised Subframe Partition (938-0150A)

- Designed for 2020 Ford Interceptor Utility
- Includes Cargo Partition Mesh (2 x 2)

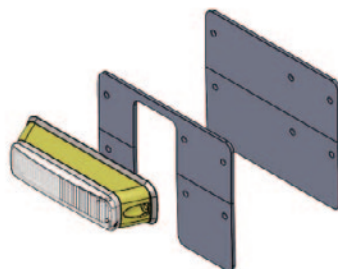
WINDOW BARS

2020 Utility Window Bars Driver/Passenger Side (937-0360A)



- Designed to fit 2020 Ford Interceptor Utility
- Rear window bar is offering protection from windows being kicked out by restrained prisoners while placed in the back seat.
- Designed to fit with rear partition cages by Setina Manufacturing.
- Optional: Light Bracket for Genesis or MR6 lights - 937-0361A

2020 Utility WINDOW BARS Driver/Passenger Side Light Kit (937-0361A)





**8820 GEORGE BOLTON PKWY.
BOLTON, ONTARIO L7E 2Y4 CANADA
TEL: 905-951-9997
FAX: 905-951-0019
TOLL FREE: 1-800-538-7338
www.dandrelectronics.com**

Published 2021

