



INTERCEPTOR 2021-22 FEATURED EQUIPMENT



SETINA

DESIGNING FOR THE FUTURE

“SmartBelt” Automatic Retracting Seat Belt and Warning System

The latest technology in Center Pull Seat Belt design. SmartBelt’s electronic seatbelt Retractor System, with Alert Light, eliminates the officer’s need to manually actuate the locking mechanism to activate the restraint mode.

11

Alert Light
Notifies Officer if Suspect becomes Unbuckled



SETINA
SMARTBELT

Patent Pending



3
Shown with “VaultLock” firearms mounting system

Freestanding or Partition Mounted Weapons Systems

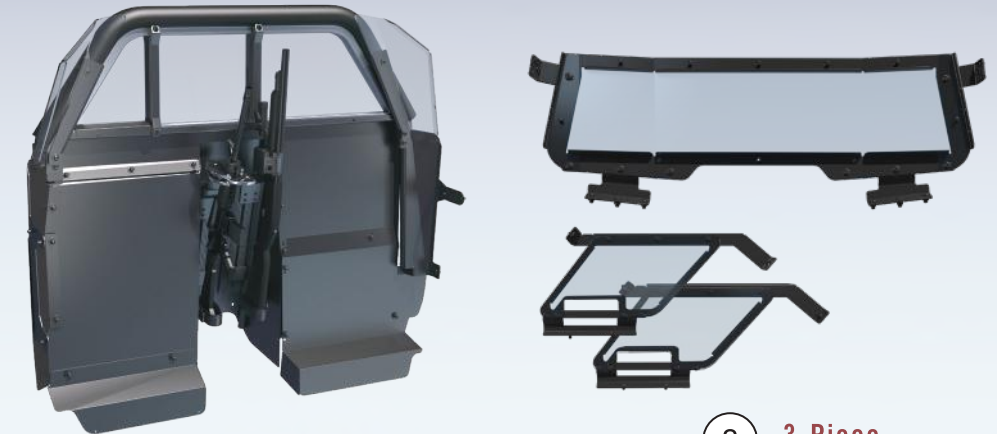
“T-Rail” Weapon Mounting Systems offer weapon flexibility and easy access. Available in single or double mount T-Rail systems.



1
450L “LED” Lighted Push Bumpers
The latest technology in push bumper design. The integrated LED lights are recessed into the push bumper for front end lighting placement and light protection.

4 **Model #10-XL Does It All!**

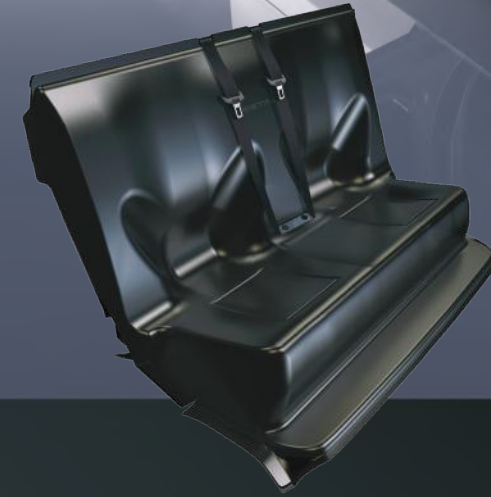
Based on our popular RP Series but with Xtra legroom. No rear leg or foot well obstruction. Recessed panel design, optimum for multiple weapon mounting systems and center consoles. Includes lower extension panels.



8 **3-Piece Rear Window Guard System**

Window Barriers & Door Guards

Heavy duty TPO Door Guards. Window barriers are scratch-resistant polycarbonate or steel.



5 **OEM Replacement or “CarbonFit” Seat Cover Transport Systems**

Made of heavy duty, moisture and pathogen resistant “TPO” polymer. “TPO” is shatter, flame and chemical resistant and exceeds NHSTA regulations.



10 **Easy-Lift Cargo Deck**

Replaces the vehicle’s factory rear compartment deck and provides a Secure Solution to lower deck radio, electronics and cargo storage.

9 **Rear Cargo, Firearms & Electronics Storage Systems**

Available with Whiteboard Option



2020 INTERCEPTOR UTILITY FEATURED FLEET EQUIPMENT

Recommended Equipment



- 1 **PUSH BUMPER - (Shown with 4 "LED" Light Option)**
PB450L4 4 "LED" Light Push Bumper
PB450L2 2 "LED" Light Push Bumper
PB400 Push Bumper **(Without "LED" Lights)**
"LED" Lighting Options Available:
Code 3, D&R Electronics, Federal Signal, Fenix, SoundOff, Tomar & Whelen
- 2 **P.I.T. IMPACT RESISTANT FENDER PROTECTORS - (Shown with PB-5 Single Bar Option)**
FK0400ITU20 PB-5 (P.I.T.) Single Bar Impact Resistant Fender Protector Wraps
FK0402ITU20 PB-9 (P.I.T.) Double Bar Impact Resistant Fender Protector Wraps

HEADLIGHT GUARDS WITH P.I.T. IMPACT RESISTANT FENDER PROTECTORS
HK0810ITU20 PB-6 Headlight Guards with PB-5 Single Bar P.I.T. Fender Protector Wraps
HK2273ITU20 PB-10 Headlight Guard with PB-9 Double Bar P.I.T. Fender Protector Wraps

HEADLIGHT GUARDS ONLY
HK0809ITU20 PB-8 Headlight Guard System
- 3 **DUAL VERTICAL FIREARMS MOUNTING SYSTEMS - (Shown with "VaultLock" Option)**
GK10141S1U "VaultLock" and "Small" Shotgun Lock
GK10301S1U "Handcuff Style" Universal AR Lock and "Small" Shotgun Lock
GK11191B1SSCA "Blac-Rac" Tactical Lock and "Small" Shotgun Lock
- 4 5 **PARTITION – XTRA LEGROOM WITH TRANSPORT SEAT (Shown with #10-XL & Replacement Seat)**
PK1130ITU20TM #10-XL Front Partition with Coated Scratch Resistant Polycarbonate Window
QK0635ITU20 "Replacement" Stand Alone Transport Seat with #12 Rear Partition
QK0495ITU20 "Cover Style" Transport Seat with #12 Rear Partition **(No Removal of OEM Factory Seat)**
Prisoner Transport Seats Available with "SmartBelt" or "Center Pull" Seat Belt System
- 6 **WINDOW BARRIERS - PRISONER AREA**
WK0514ITU20H Horizontal Steel Bars
WK0595ITU20 Slotted Scratch Resistant Polycarbonate
- 7 **DOOR GUARDS**
DK0100ITU20 Impact Resistant TPO Polymer **(Fits over OEM Factory Door)**
- 8 **WINDOW BARRIERS - CARGO AREA**
WK0040ITU20 3-Piece Horizontal Rear Window Bars - **(Requires #12 Rear Compartment Partition)**
- 9 **REAR CARGO MULTI-TIER STORAGE BOX SYSTEM (Multiple Configurations and Lock Options)**
(Not Easy-Lift Compatible)
TK0241ITU20 Top Section - **DSC** – Lift top, Fixed Box with Combination Lock
Center "Base" Section - **BSN** – Base, Sliding Box with No Lock
TPA9289 Optional: Bottom Section - **TRN** – Tray, Radio with No Lock
(Rear Cargo Partition or Freestanding Brackets Required – Sold Separately)
- 10 **EASY-LIFT CARGO & ELECTRONICS STORAGE DECK - (Dual Drawer Storage System Compatible Design)**
TK2307ITU20 Locking Cargo Storage Deck with Electronics Tray
TK1410ITU20 Easy-Lift "Dura-Deck" Mar-Resistant, Non-Slip Deck Cover

EASY-LIFT DUAL DRAWER CARGO STORAGE SYSTEM (Easy-Lift Compatible Design - Multiple Locks)
TK1419ITU20 Easy-Lift Side by Side Dual Drawer Cargo Storage System with Electronics Tray